



2782 Sheffield Crescent



# Stunning Rancher...

Stunning Rancher built in 2021, located in Crown Isle's Cambridge Park Estates, ideally positioned on the 13th fairway w/ northern exposure. Sophisticated luxury, clean lines & contemporary styling, open concept plan w/ spacious room sizes, 9' ceilings throughout & 10' ceilings in the entry & great rooms, 2,084 sf, 3 BD/ 2 BA. Fine finishing & contemporary hues, linear gas fireplace, engineered wide plank hardwood flooring, quartz counters, crown molding. This dream kitchen boasts a large quartz island, window over the sink & hidden walk-in butler's pantry. French doors from the Great room open to the covered patio, ideal for BBQ's. The master suite offers a large walk-in closet & 5 pce ensuite, dual vanities, W/C, air-jetted tub, & fully tiled curbless glass shower. Crawl space 6'4" in center w/ stair access. H/W on demand, Carrier Air Purifier System, Heat Pump, 3 car garage w/ Polyaspartic flooring & 4th glass garage door to the side gardens. Low maintenance yard, gorgeous gardens.



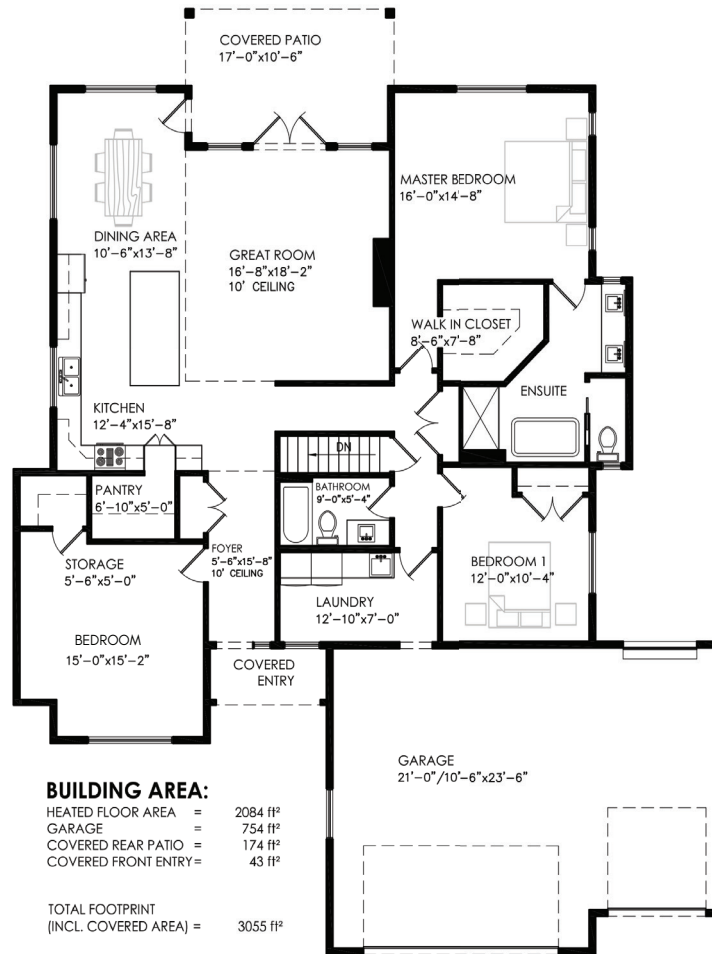
2782 Sheffield Crescent  
Listed at \$1,420,000  
3 Bd | 2 Ba  
2,084 Sq Ft



MLS #: 1023281  
Lot Size: 0.20 Acres  
Year Built: 2021  
Zoning: CD-1H



## 2782 SHEFFIELD CRESCENT



Visit our website for all Comox Valley listings, neighbourhood guides,  
and resources for buyers & sellers!

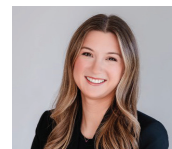
[www.janedenham.com](http://www.janedenham.com)



**Jane Denham**  
PERSONAL REAL ESTATE CORPORATION  
250.898.1220  
jane@janedenham.com



**Grace Denham-Clare**  
REAL ESTATE AGENT  
250.897.8890  
grace@janedenham.com



**Marnie Denham-Clare**  
REAL ESTATE AGENT  
250.218.4563  
marnie@janedenham.com



282 Anderton Road  
Comox, BC V9M 1Y2  
o. 250.339.2021

